

Panasonic



Home IoT Gateway

Start!

Panasonic HOME IoT



The Internet of Things (IoT) connects and controls a wide range of “things” over a network.

This advanced technology is beginning to make major advances in home comfort.

The Panasonic HOME IoT Gateway allows you to benefit from this by renewing your living environment with Panasonic’s technology and know-how.

Design

The refined white body design suits a wide range of interiors.



BASIC PLAN

See your electricity usage at a glance and in detail.

BEFORE



I won't know how much electricity I've used until my end of year bill arrives.

AFTER



I can check my electricity usage easily on the Gateway LED or in detail using the app.

The LED changes colour to let you know your home energy usage.



GREEN

Less than 100% of the current month's electricity usage target



ORANGE

101% to 109% of the current month's electricity usage target

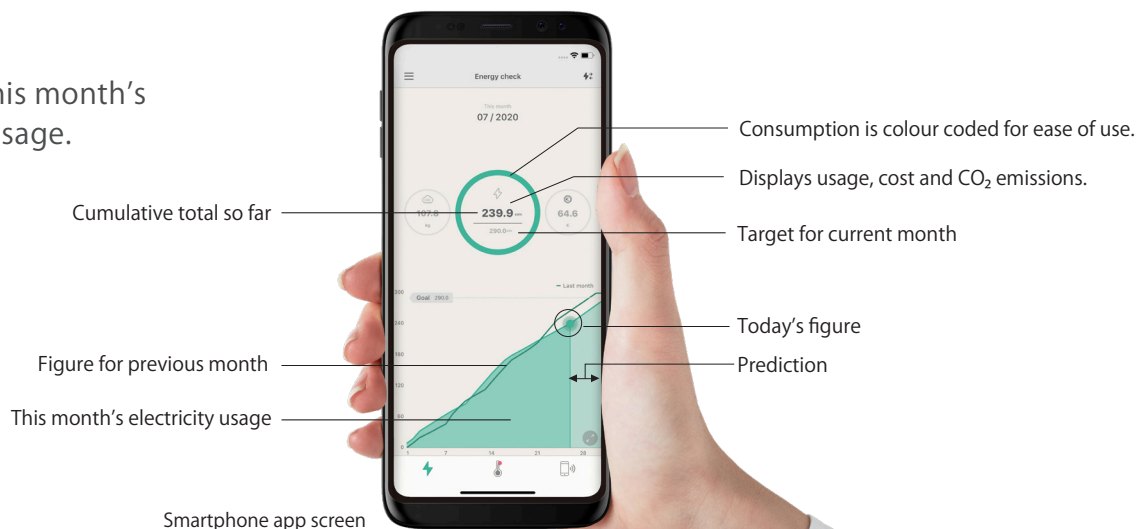


RED

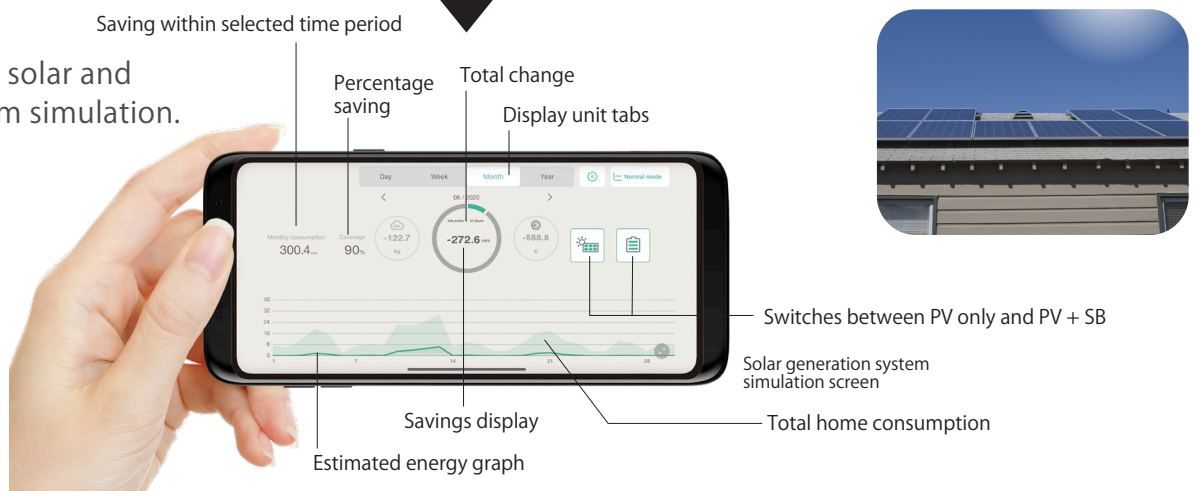
Over 110% of the current month's electricity usage target

Details such as usage and energy prices can be checked in the smartphone app.

Checking this month's electricity usage.



Also provides solar and storage system simulation.

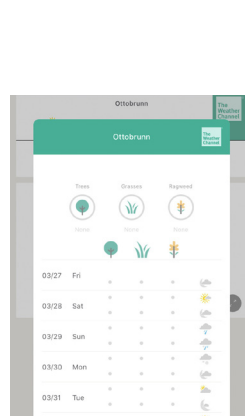


OPTION MENU

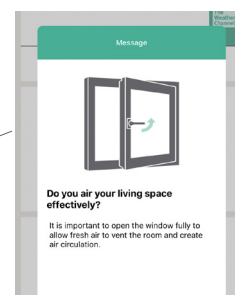
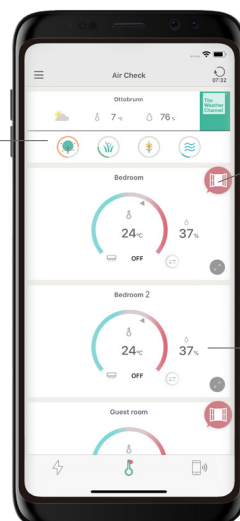
IAQ Management

Check and manage the air quality in your room to ensure its always a pleasant environment.

You can also check pollen levels including tree, grass and ragweed pollen.



Air quality screen



Ventilation alert

This icon lets you know it's time to ventilate a room.

Room-specific information
Displays temperature and humidity data for each room

It even reminds me when to ventilate!



Products

The following devices are required to get started with the Panasonic Home IoT.

A WLAN environment is required to connect to the Panasonic Cloud via the Internet.



BASIC PLAN

Home IoT Gateway (MKG100C913)

Dimensions: 144.6mm (W) × 28.6mm (H) × 144.6mm (D)

The central device of your Home IoT.

View power usage data from the Power Measuring Unit and temperature and humidity data from the Temperature/Humidity Sensor on the smartphone App.



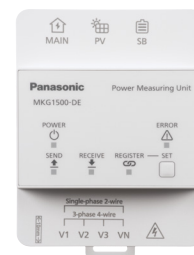
Home IoT Gateway

Power Measuring Unit (MKG1500-DE)

Dimensions: 72mm (W) × 90mm (H) × 60mm (D)

A device for measuring energy usage.

A specialist is required for installation and initial setup.



Power Measuring Unit

OPTION MENU IAQ Management

Temperature/Humidity Sensor

Dimensions: 84mm (W) × 84mm (H) × 32mm (D)

A sensor for measuring temperature and humidity must be installed in each room to be monitored.



Temperature/Humidity Sensor Indoor (MKG1301913)



Temperature/Humidity Sensor Outdoor (MKG1302913)

* Screen layout may differ depending on your smartphone model. Screen layout may change without notice. (July 2020)
* All images shown in this document are for illustrative purpose only.

Contact

+ 49-89-45354-2745

Mon.-Thu./8:00~12:00 13:00~17:00
Fri./8:00~12:00 13:00~14:00

WEB site

<https://industry.panasonic.eu/energy-building/home-iot>